

C

Fraps 5.4

med swing

♩ = 188

Morten Christian - April 2010

Count in: 1,2,3,4 - 1,2: PLAY

A

Section A, measures 1-8. The score is in 2/4 time, with a key signature of one sharp (F#). The melody is in the right hand, and the bass line is in the left hand. Chords are indicated above the staff: A Δ 7(#11), A Δ 7(#11), Cm7, F/F#, E Δ 7(#11), Gm7, Gm7, A7(#11), C Δ 7(#5), Dbm11, Bb7(b13). The melody features a triplet in measure 4 and a repeat sign in measure 8.

B

Section B, measures 9-16 and 17-24. The score is in 2/4 time, with a key signature of one sharp (F#). The melody is in the right hand, and the bass line is in the left hand. Chords are indicated above the staff: Db6(#11), Ebm11, F7(#11), A Δ 7(#11), Db6(#11), Ebm11, F7(#11), Cm Δ 7, Eb Δ 7(#5), Cm Δ 7, Eb Δ 7(#5), Em11, Abm7, Cm Δ 7, Eb Δ 7(#5), Cm Δ 7, Eb Δ 7(#5), Em11, Abm7, A Δ 7(#11). The melody features a triplet in measure 13 and a repeat sign in measure 16. The section ends with a 3/4 time signature change in measure 24.

C

21 $A\Delta 7(\#11)$ Cm^7 $F/F\#$ $E\Delta 7(\#11)$ Gm^7

25 Gm^7 $A^7(\#11)$ $C\Delta 7(\#5)$ $D\flat m^{11}$

28 $B\flat 7(\flat^{13}_9)$ $D\flat 6(\#11)$ $E\flat m^{11}$ $F7(\#11)$ $A\Delta 7(\#5)$

fine

Solos

A A B A

A

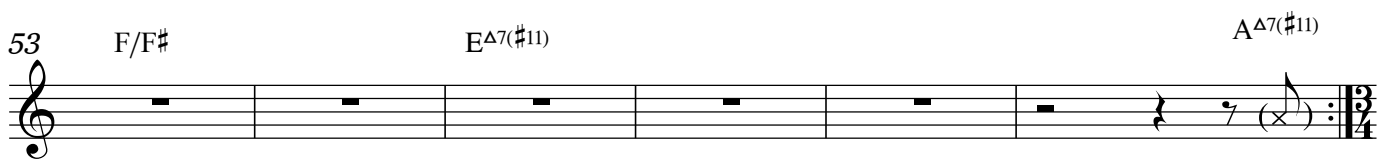
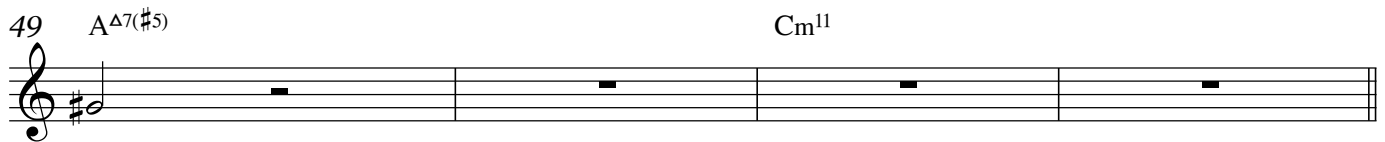
31 $A\Delta 7(\#5)$ Cm^{11}

35 $F/F\#$ $E\Delta 7(\#11)$

B

41 Cm^{11} $A\flat m^{11}$ Cm^{11} $A\flat m^{11}$

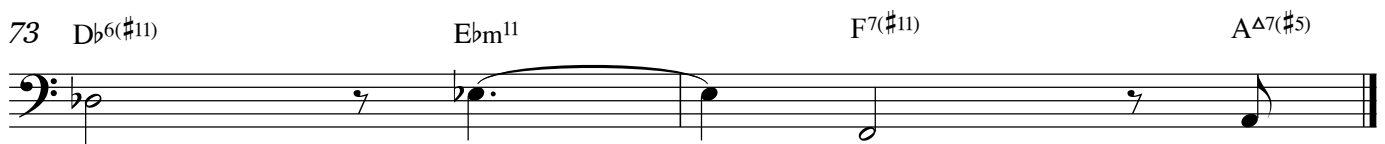
A

*Drum solo pick up***Drum Solo**

open



on QUE



to THEME!